


LOFT UP YOUR LIFE 

# LOFT DOORS

REAL LIVING. FOR EVERY SPACE.

 FLYNN



# TABLE OF CONTENTS

<b>FLYNN-STORY</b>	3 – 7
<b>DOOR TYPES</b>	8 – 9
HINGED DOORS	10 – 13
HINGED DOOR FRAMES	14 – 15
PIVOT DOORS	16 – 17
SLIDING DOORS	18 – 19
FIXED PANELS	20 – 21
<b>PROJECT DESIGN</b>	22 – 25
<b>GLASS BAR DESIGN</b>	26 – 27
<b>GLAS- &amp; COLOR-DESIGN</b>	28 – 29
<b>HANDLE DESIGN</b>	30 – 31
<b>YOUR DESIGN</b>	32 – 33
<b>YOUR IDEAS</b>	34 – 35

# LOFT UP YOUR LIFE



**FLYNN REVOLUTIONIZES  
LIVING WITH  
AUTHENTIC LOFT DOORS  
MADE FROM RECYCLED  
ALUMINUM.**

## **FLYNN WHO?**

**FLYNN** stands for authenticity, responsibility, and a vision to enrich life through conscious solutions. Our strength lies in our people – their tireless dedication, innovative spirit, and commitment shape who we are today and who we will become tomorrow.

The **FLYNN EFFECT** describes how intelligence evolves across generations. That is our promise: products that adapt, grow with you, and continue to get better over time.

## **FLYNN WHAT?**

A loft door is more than just a product - it transforms how you experience a space. It brings openness, lightness, and atmosphere. It connects not only rooms, but also people and moments. Refined design, lasting strength, and sustainability unite in handcrafted quality from East Westphalia. With easy installation and thoughtful functionality, our doors create more than a product - they create a new sense of well-being in your home.

**FLYNN GMBH** | Pastor-Tegethoff-Straße 22 | 59590 Geseke  
info@flynn-gmbh.de | www.flynn-gmbh.de |  loft\_by\_flynn





## REAL – FROM THE VERY BEGINNING.

In the early 1940s. In New York, warehouses are transformed into studios, apartments, and spaces for ideas. The old steel beams, raw walls, and large windows remain. Not for style, but for practicality. And this is precisely what gives rise to something new: the industrial look.

Metal, glass, concrete, brick—materials without cladding, without makeup. Structures that write stories. Wires and pipes that are not hidden, but reveal the origins of the space.

Today, this style is not a trend, but a way of life. Urban. Authentic. And quite clearly: **FLYNN**.

**WE DON'T CALL IT DESIGN. WE CALL IT ORIGIN.**

## BECAUSE IT'S NOT ABOUT DOORS. IT'S ABOUT WHAT'S IN BETWEEN.

Aluminum. Glass. Powder coating. Technology, dimensions, precision.  
But really, it's about connection.  
Between spaces. Between people. Between moments.  
A team of people with values and dedication.  
What is created here is more than just a door.  
It is a feeling that is built into it.  
From the first draft to the last screw:  
for encounters, for connections, for authenticity.  
Design with meaning. Materials with responsibility.  
Products that bring your home to life.

**FOR EVERYONE WHO BUILDS WITH THEIR HEART.  
FOR EVERYONE WHO LIVES AUTHENTICALLY.**





Hinged doors Timeless | 4 rungs, clear glass | black, RAL 9005, matt, fine structure | C-handle

# FOR EVERYONE WHO LOVE AUTHENTICITY.

## **PROFILE WITH CHARACTER.**

Delicate. Slim. Only 24 mm visible. Almost as if drawn.  
And yet strong enough to hold space.

## **MATERIAL WITH A PAST.**

Reclaimed aluminum. Already been part of something.  
Now ready for something new.

## **THINK BIGGER.**

Up to 6 meters high. Up to 3.5 meters wide. Without add-ons. With or without skylights.  
One line. From bottom to top.

## **JUST THE WAY YOU WANT IT.**

Color. Glass. Handle. Turning, sliding, swinging – opening. Holding.  
Not everything is predetermined – but everything is possible.

## **GLASS THAT PROTECTS. AND OPENS.**

Toughened ESG safety glass – impact-resistant – clear, satin-finished, or tinted.  
Lets light in. Protects quietly. Brings peace.

## **INSTALL. OR HAVE IT INSTALLED.**

Homemade. Or manufactured. Both are good.

## **QUIET TECHNOLOGY. STRONG EFFECT.**

Magnetically guided. No electricity. No resistance.  
A sound like a full stop at the end of a sentence.



**CONFIGURE NOW**  
**YOUR OWN LOFT DOOR!**

# DOOR TYPE



Hinged doors Timeless | 4 bars, clear glass | black, RAL 9005, matt, fine texture | C-handle



Sliding door in the wall, Timeless | 3 bars, clear glass, black, RAL 9005, matt, fine texture | without handle

## DOOR TYPES

### HINGED DOOR



### PIVOT DOOR



### SLIDING DOOR IN FRONT OF THE WALL



### SLIDING DOOR IN THE WALL



### FIXED ELEMENT



# A LOFT DOOR IS NOT JUST A LOFT DOOR

## ROTATING. SWINGING. SLIDING.

Whether hinged door, pivot door, sliding door, or fixed element—almost anything is possible. The hinged door works in the traditional way with hinges and opens to one side. The pivot door rotates in both directions – perfect for open-plan rooms. The sliding door saves space and creates new spatial relationships – running along or inside the wall. The fixed element complements everything – as an end panel or floor-to-ceiling glazing.

**EACH VARIANT CAN BE INDIVIDUALLY CUSTOMIZED:  
DIMENSIONS, COLOR, HANDLE, GLASS... FOLLOW THE PLAN OR YOUR GUT FEELING.**



 [live.like.archi](https://www.instagram.com/live.like.archi)



Pivot door, Base | FritsJurgens® System One | Clear glass | black, RAL 9005, matt, fine texture | without handle

## A SIMPLE CALCULATION

10 openings per day (single household, quiet life):

$200,000 \div 10 = 20,000$  days  $\approx$  55 years  $\rightarrow$  That adds up to over 50 years of reliability

20 openings per day (active family, curious children, dog with its own door policy):

$200,000 \div 20 = 10,000$  days  $\approx$  27 years  $\rightarrow$  Power for over 25 years of maintenance-free operation

For everyone who wants to know exactly.

# EVERYTHING REVOLVES

## SOMETIMES THE SIMPLEST THINGS ARE THE MOST REVOLUTIONARY.

You know the feeling: a door that opens as it should. That delivers what it promises. That simply works—and then looks as if an architect designed it personally for your space. Our swing door does exactly that: it swings. Period. But how it does it is the difference between "... it'll do" and "holy shit, that's beautiful."

Delicate to the max. Magnetically closed. Ready for anything life throws at it. And tested 200,000 times. At least.

## SWING DOOR FACTS

- DIN left or right – means: hinged on the left or right
- SIMONSWERK premium hinge technology
- Magnetic latch lock (no electricity, no stress)
- Up to 1.2 m wide and up to 4 m high – with/without skylight fuss
- Profiles so delicate that they are almost invisible (24 mm)
- Symmetrically divided glazing bars (12 mm thick)
- Magnetic locking as standard
- Magnetic latch lock optional
- SmartLock handle, e.g., for the toilet (one handle= closes+ locks)



SmartLock handle | Toilet lock



Screw connection corners

Swing door Classic | 6 panels, clear glass | black, RAL 9005, matt, fine texture | SLIM handle, 308 mm



# SWING DOORS DOUBLE-LEAF



Hinged door 2-leaf + fixed elements | Active leaf + fixed leaf with bottom and top fix | 4 bars, clear glass | black, RAL 9005, matt, fine structure | C-handle

# WHY ONE, WHEN TWO CAN TURN

## SOMETIMES HAPPINESS JUST DOUBLES ;)

You stand in front of a door and think, "One would be nice." And then suddenly two open. Left and right. Our double-leaf swing door does just that: it multiplies moments. But how it does it is the difference between "more is more" and "wow, that's well thought out."

Two wings that know when to dance solo and when to "move in harmony" in a duet. Ready for anything life throws at them. Double the fun. Simply ingenious. Ready for more than 400,000 moments of delight.

## TWO-WINGED FACTS

- Both wings can be operated simultaneously or individually
- Floor lock and top lock on the stationary wing (for maximum stability)
- Total width of over 2 m possible (up to 2 x 1.2 m)
- Can be combined with fixed elements (if you like total works of art)
- Magnetic closure for both sides (two movable panels)
- Optionally lockable with SmartLock handle (one active and one passive wing)
- Tested for 200,000 cycles per wing (yes, really)



Fixed leaf with top lock closed



Fixed leaf with bottom lock open



Fixed leaf with bottom lock closed

## FRAMES

# NARROW EDGE PURE EFFECT

Others talk about "discreet." FLYNN makes 24 mm.

So while Villabajo is still thinking about how to hide its frame, Villariba has already installed it. Flush with the surface. Period. The most delicate frame on the market. Because sometimes less is simply enough.



Hinged door Timeless + fixed element | SLIM frame | 3 bars, clear glass | SLIM handle, 308 mm



SLIM frame hinge side

### MINIMALISM IN ITS PUREST FORM

The narrowest frame: a slim aluminum profile – only 12 mm visible – closes flush with the wall and maximizes the passage width. Visible VN hinges from SIMONSWERK with a clear design underline the technical character of the door – functional, honest, style-defining. Perfect for modern living spaces, progressive office environments, or anywhere where minimalism is part of the concept.

Hinged door Timeless | SLIM frame | 3 bars, clear glass | SLIM handle, 308 mm



# MORE FRAMES FOR MORE PEACE AND QUIET



Hinged door Timeless | block frame | 3 bars, clear glass | C-handle



Block frame hinge side

## **SHOWING AN EDGE HAS NEVER BEEN SO STYLISH**

Visible strength. Maximum effect.

An aluminum frame that rests on the room side and precisely frames the entire wall opening. Ideal for solid door leaves, large doorways, or rooms with special requirements in terms of load-bearing capacity and sound insulation. SIMONSWERK's high-quality VX hinges offer the necessary adjustment options that are indispensable in commercial buildings—from pressure point adjustment to height adjustment. Supplemented by lowerable floor seals, this creates a solid construction for doors that make an impression while remaining technically superior.

## **WHEN STABILITY MATTERS ...**

for example, with XXL doors or anywhere where there is a lot of activity.

## **WHEN SOUND INSULATION IS REQUIRED...**

and you don't want to hear every rumor in the hallway.

## **IF YOU VALUE A RICH LOOK ...**

that doesn't hide, but frames the room.

## **IF YOU WANT A CLEAR SEPARATION...**

between living room and home office, everyday life and downtime.

# PIVOT DOORS



 [strider.gsd](https://www.instagram.com/strider.gsd)

Pivottür 1-flg. + Festelement Individuell | SLIM Plus Pivotbeschlag | Klarglas | schwarz, matt | SLIM-Griff, 308 mm

## WELL CONSTRUCTED.

### MILLIMETER-PRECISE. FLOOR-INDEPENDENT.

Not every floor is the same. Not every room height is the same. That's why we have developed adjustable feet that compensate for exactly what reality brings. Adjustable to the millimeter. On any surface. Can also be adjusted retrospectively.

With two-part pivot doors, one element is often fixed in place – one rotates, one remains stationary. Here, the adjustable feet ensure the perfect height, while the brush seal ensures a clean finish. No gaps, no compromises. Simply beautiful throughout.

### ADJUSTABLE FOOT FACTS

- Infinitely height-adjustable during installation
- Works on all floor coverings
- Brush seal for elegant privacy protection
- Retrofitting possible



Adjustable feet fixed element



Brush seal fixed element

# THE PIVOT PRINCIPLE

## HARNESS GRAVITY. UNDERSTAND LEVERAGE. PERFECT PIVOT.

You stand in front of a room and want to open it up generously. Monumental formats. Minimalist to the max. A door that opens inwards and outwards – depending on what the moment requires. Perfect for hallways and passageways, where it swings back automatically, keeping noise out and warmth in. A pivot door rotates around its own center of gravity like a planet around its axis. The pivot point is located exactly where Newton would have calculated it. Concealed mounting. An elegant solution.

The result? A door that opens like a breeze – smoothly, powerfully, in perfect balance. With premium fittings from FritsJurgens®, each door leaf moves as if floating on air. Pure physics. Luxuriously executed. Free rotation is standard. Self-closing with damping & hold point is optional.


## PIVOT SCIENCE

- FritsJurgens® Premium fittings – precision for smooth movement
- Up to 6 m x 6 m – size follows function
- Only 9 mm floor engagement – your underfloor heating remains untouched
- Self-adjusting – automatically returns to its resting position



FritsJurgens®



 wohn\_gerne

Pivot door 2-leaf Base | FritsJurgens® System One | 2 swing leaves | Clear glass black, RAL 9005, matt, fine structure | SLIM handle, 1100 mm, floor-to-ceiling



Pivot door Individual | SLIM Plus pivot fitting | Clear glass black, RAL 9005, matt, fine structure | SLIM handle, 160 mm

# SLIDING DOORS



Full passage width-usable.  
The sliding door disappears  
into the wall.

Sliding door running in the wall, 2-panels, Timeless | 3 bars, clear glass | black, RAL 9005, matt, fine texture | without handle

# SHIFTING

# PERSPECTIVES

## DESIGNED TO SAVE SPACE. MASTERFULLY EXECUTED.

While other doors take up space, this one creates it. That's not just practical—it's the ultimate in interior design. Space-saving installation and stylish looks—that's the game changer. While classic hinged doors block space, sliding doors create open floor plans and flexible room layouts.

## SLIDING FACTS

- Under the ceiling, running in or in front of the wall: completely hidden or visible
- Full use of space instead of swing area: space gain of up to 1.5 m<sup>2</sup>
- Flexible room layout for open floor plans thanks to space-saving design
- Soft-close damping
- Stays in place wherever you need it thanks to variable positioning
- Can be combined with fixed elements
- Room-height design
- Best quality with our own sliding sashes
- Alternatively compatible with any conventional sliding door system



Sliding door, 1-leaf + Fixed element, Timeless | Ceiling mounting | SLIM handle, 160 mm



Sliding door in front of the wall, 1-leaf, Timeless | SLIM handle, 160 mm

# FIXED PANELS



## POSSIBILITIES & DESIGN

All glass. All yours. A fixed panel can be designed just like any **FLYNN** loft door. Choose from a wide range of glass types and RAL colors, clear glass for open views, frosted glass for privacy, or tinted Parsol tones for an elegant play of light. Fixed panels shape the atmosphere, create inspiring workspaces, and bring living areas that signature loft feeling - full of function, without movement.

## LOFT UP YOUR SPACE

Fixed Panel Base | white, RAL 9016, matt, fine texture

# WHEN PRESENCE... STANDS STILL

## FIXED DOESN'T MEAN STATIC

A fixed panel isn't a door. But it turns a door into a system. It extends lines, defines axes and creates calm. And sometimes, it's simply light – beside the door, above it, or floor-to-ceiling.

The glass? The same as for our doors – clear, frosted, tinted or mirrored. The profiles? 24 mm, of course.

The impact? Greater than you'd expect. Fixed panels connect, structure and define.

They don't move – but they mean something.

**BECAUSE NOT EVERY SURFACE HAS TO OPEN. SOME SIMPLY SHOW THE WAY FORWARD.**

## FIXED PANEL FACTS

- Compatible with all door types (hinged, pivot, sliding)
- Glass surfaces up to 6 m high / 3.5 m wide
- Can be mounted to wall or ceiling
- Floor-to-ceiling, with transom or side panels
- Can be combined into continuous system walls
- Same colour and mullion designs as FLYNN doors



Single Hinged Door + Fixed Panel | 1 mullion, Parsol glass | black, RAL 9005, matt, fine texture | SLIM handle, 308 mm



Single Sliding Door | Classic + Fixed Panel | 8 panes, clear glass | black, RAL 9005, matt, fine texture | SLIDE handle, 160 mm

# PROJECT DESIGN



Hinged door, 1-leaf + Fixed elements + Skylights, Timeless | 2 bars, clear glass | SLIM frame | black, RAL 9005, matt, fine structure | SLIM handle, 160 mm

# OBJECTIVELY VIEWED ...

**LOFT DOORS ARE A LOGICAL AND OBVIOUS CHOICE AS ROOM DIVIDERS IN HOTELS, OFFICES, AND PRACTICES. – AND DAMN STYLISH.**

*Why exactly?*

**PLANNED WITH PRECISION**

Tailor-made solutions, technical drawings, and project coordination on an equal footing.

**INSTALLED WITH SYSTEM**

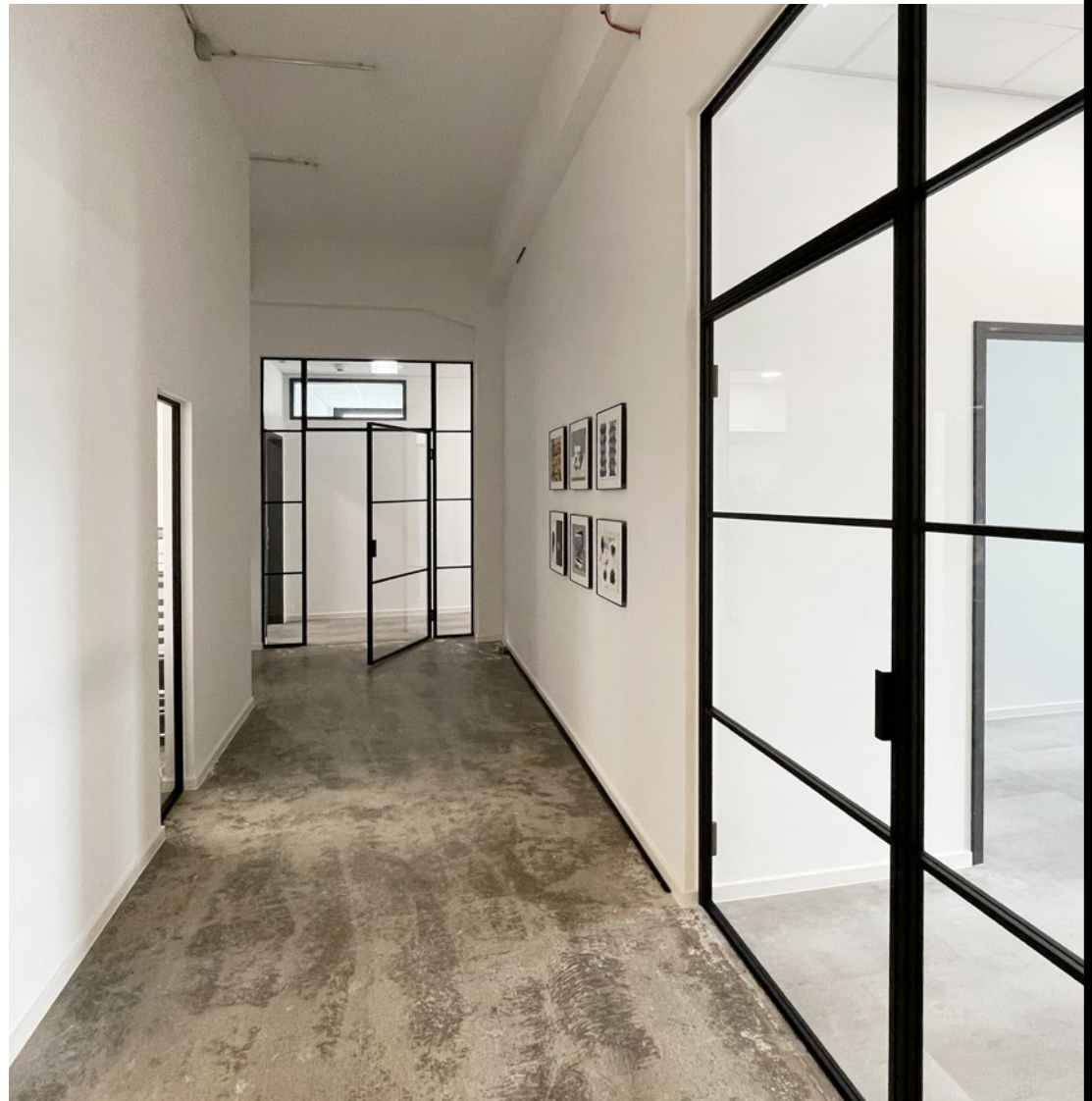
Installation by trained partners or clear handover to the executing trades – fast, clean, reliable.

**SCALED WITH QUALITY**

For individual items or series: consistent manufacturing standards, durable materials, reliable delivery times.



Hinged door + Skylight | Block frames | Satin glass



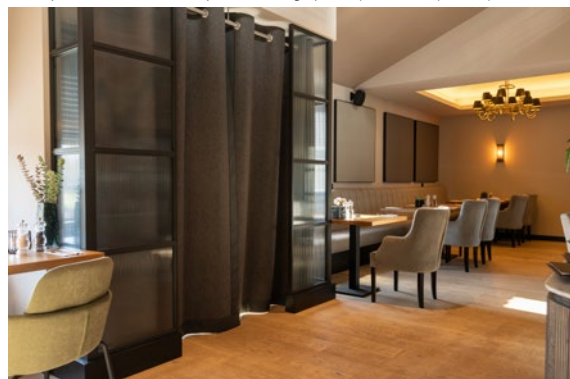
Hinged door, single leaf + Fixed elements + Skylight, Timeless | SLIM frames | 2 bars, clear glass | black, RAL 9005, matt, fine structure | SLIM handles, 160 mm

# ... ARE THERE ROOMS THAT NEED TO DO MORE

Who welcomes guests. Who must radiate trust before a word is spoken. Who turns four walls into an experience. They don't need a door. They need a feeling. FLYNN creates loft doors for rooms that generate atmosphere. Every day. For everyone.



Fixed element classic | 4 panels, Masterline + powder-coated metal plate with logo | black, RAL 9005, matte, fine texture



Fixed element as vestibule classic | 4 panels, Masterline | black, RAL 9005, matte, fine texture

## HOTELS & GASTRONOMY

The first sip begins at the entrance.  
Atmosphere is created. We supply the material for it.

## OFFICES: LAW FIRMS, CONSULTING & INSURANCE

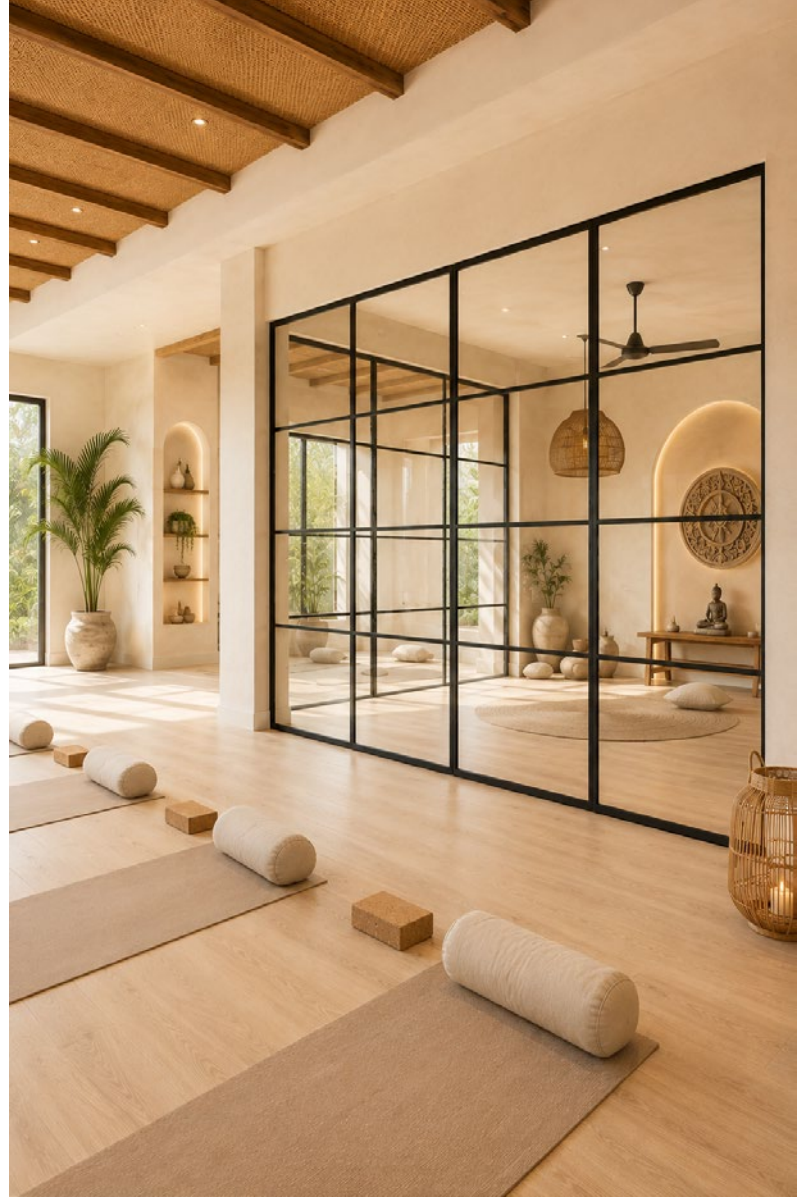
Whoever sells trust must show it.  
Even before anyone speaks.

## CO-WORKING & MEETING ROOMS

Thinking together. Focusing alone.  
At the same time. Inside, silence. Outside, life.

## FITNESS, YOGA & WELLNESS

Where body and mind arrive.  
Between focus and relaxation.



Fixed element classic | 4 panels, clear glass | black, RAL 9005, matte, fine texture

Single-leaf hinged door + fixed elements basic | Block frame with floor seal | Clear glass | Black, RAL 9005, matte, fine texture | lockable

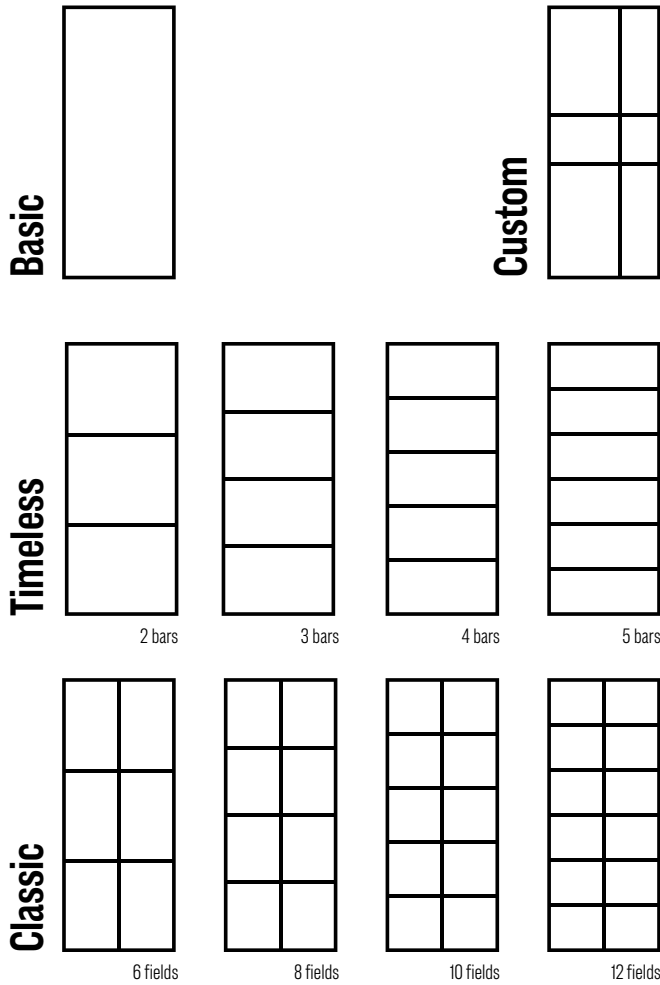


# HOME CAN BE PLANNED

Every style: tailor-made design with a refined touch.

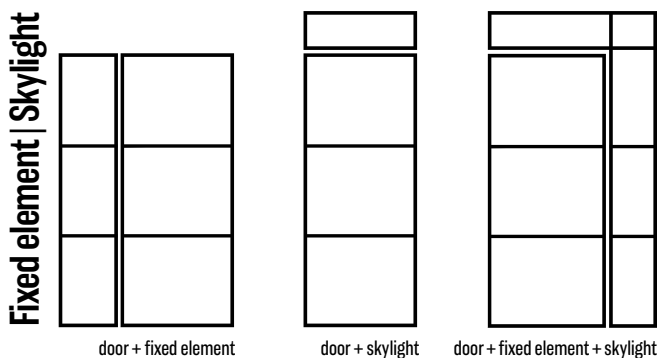
Every need: make a striking statement or simply connect rooms.

Every element: individually planned, precisely manufactured.



**Custom**

All doors are available as 2-leaf doors.



Pivot door, Base, SLIM Plus pivot fitting, clear glass | black, RAL 9005, matt, fine texture | SLIM handle, 1100 mm, floor-to-ceiling



# GLAS AND COLOR DESIGN



Mirror, black, RAL 9005, matte, fine texture

Pivot door, Base | FritsJurgens® System One | Clear glass | black, RAL 9005, matt, fine texture | without handle



**GLASS MAKES THE DIFFERENCE.**

Clear glass lets you see. Frosted glass lets light in while shielding views from outside. Bronze warms, black glass emphasizes contours, and Masterline deliberately defines lines.

**YOU CHOOSE. WE BUILD. AND EVERY DAY, WHEN YOU WALK THROUGH THE DOOR, YOU KNOW: YOU MADE THE RIGHT DECISION.**



Hinged door, Base | Masterligné | olivegreen | SLIM handle, 160 mm



Pivot door, Base, SLIM Plus pivot fitting, clear glass | white, RAL 9016, matt, fine texture | SLIM handle, 160 mm

# COLOR WITH SOUL

**AT FLYNN, COLOR ISN'T JUST A LAYER ON THE PROFILE. IT'S THE MOMENT WHEN ALUMINUM AND GLASS BECOME SOMETHING THAT FEELS LIKE IT BELONGS TO YOU.**

**BLACK** Early 1940s, New York. Steel beams, raw walls, pipes that don't hide. Black was always there: the color of the industrial look that needs no explanation. Whoever chooses black chooses the loft door as it was meant to be.

**WHITE** More than the absence of color. The calm before the storm, the blank canvas before the masterpiece. Walls recede, light fills the room: a promise of clarity and endless possibilities.

**AND EVERYTHING YOU DARE TO THINK.**

Every color you can imagine—because your home is your home.

# HANDLE DESIGN

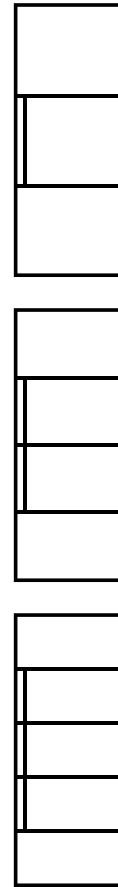
# HANDLE'S WITHIN REACH



## HANDLE BAR

160 mm | 308 mm | 604 mm | 1100 mm or made to measure

The length of the handle bars is automatically adjusted to your custom-designed loft door.



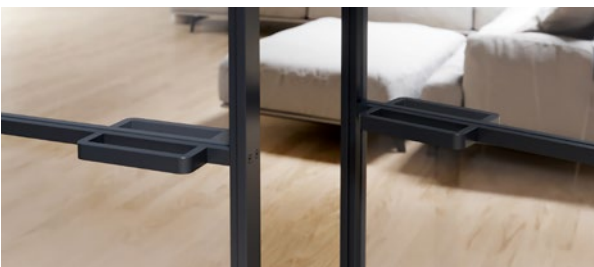
## SLIM HANDLE

160 mm | 308 mm | 604 mm | 1100 mm or made to measure



## SLIDE HANDLE

160 mm | 308 mm | 604 mm | 1100 mm or custom-made



## C-HANDLE



## MAGNETIC LATCH LOCK with integrated locking technology

UV short | UV long | PZ long

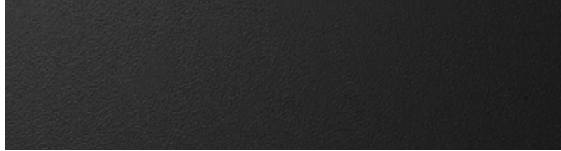
**PS:** The handles can also be used as furniture handles.

# PROFILES

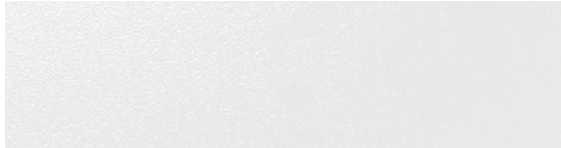
## IS BLACK & WHITE COLORFUL ENOUGH?

Black and white are two powerful colors that can be used in a variety of ways. Whether used individually or in combination, they convey a timeless and classic feel. Those who prefer color can choose from a wide range of RAL shades.

The powder-coated surfaces with a fine texture give every color depth—and every door that extra touch of style. Scratch-resistant, impact-resistant, UV-resistant. Made for real rooms.



**BLACK**  
RAL 9005  
Fine texture



**WHITE**  
RAL 9016  
Fine texture



**COLORED**  
RAL  
colour of choice

# GLASS

## I SEE YOU – I DON'T SEE YOU ...

The choice of different glass types depends entirely on personal preference.

**CLEAR GLASS** > Full transparency

**SATIN GLASS** > Light without curiosity

**PARSOL GRAY** > Understatement with impact

**BRONZE GLASS** > Sunset in the room

**BLACK GLASS** > Pure contours

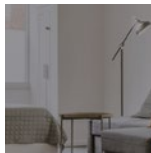
**MASTERLIGNE** > Glass with intention



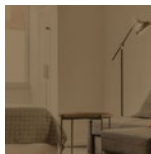
**CLEAR GLASS**  
ESG or VSG  
6 mm



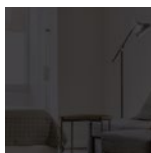
**MASTERLIGNE**  
ESG  
6 mm



**PARSOL GRAY**  
ESG  
6 mm



**PARSOL BRONZE**  
ESG  
6 mm



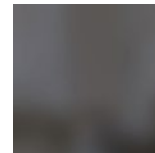
**BLACK GLAS**  
ESG  
6 mm



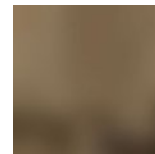
**SATIN GLASS**  
ESG or VSG  
6 mm



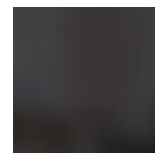
**SATIN WHITE GLASS**  
ESG or VSG  
6 mm



**SATIN PARSOL GRAY**  
ESG  
6 mm



**SATIN PARSOL BRONZE**  
ESG  
6 mm



**SATIN BLACK GLAS**  
ESG  
6 mm

# YOUR DESIGN



**CONFIGURE NOW**  
**YOUR OWN LOFT DOOR!**



# LOFT UP YOUR LIFE

## DESIGN WHAT'S ALREADY IN YOUR HEAD.

The space. The line. The door that doesn't just close—it makes a difference. Maybe it was just an idea. A thought that was there for a moment—but stayed. You knew right away: This is it. This is how it should feel. This is how it should look.

No off-the-shelf doors. But one that seems to have been designed just for you. Because you designed it. You decide on the grid. The color. The effect. And suddenly there is not just a door—but a connection. In your home. With your signature style.



The images you see here?

An AI visualized them for you—based on exactly those thoughts. Because courage to do more often starts the same way: with an idea that you dare to think first. And the will to make it real.

# MAKE IT REAL.

## HERE'S THE SPACE FOR WHAT'S STILL TO COME.

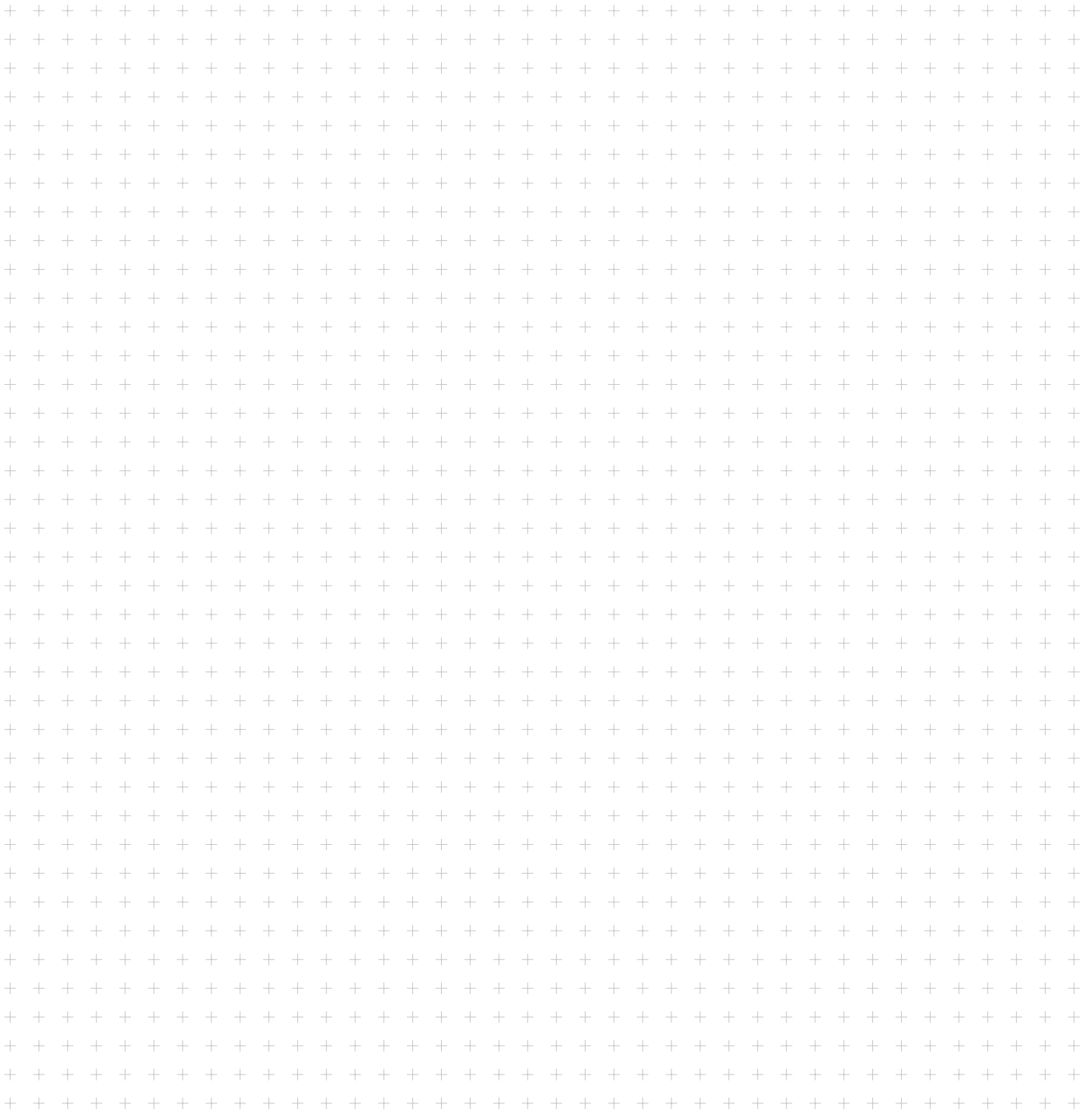
An idea that suddenly appears – in the middle of a chat, over coffee, while your eyes wander across the room.

The best spaces aren't created in software. They come to life here. By hand. With heart. With the belief that a sketch can turn into something real. Your vision.

**FLYNN** transforms reclaimed aluminium into genuine loft doors – with devotion, precision, and the conviction that every material deserves another chance. You turn thoughts into real spaces. With the same passion? Then go for it. Draw. Dream. Plan. Sketch the room the way you want it to be. We don't just build what you imagine – we build what you feel. What's truly yours.



**THESE PAGES ARE YOURS. FILL THEM WITH LIFE.**



# LET'S TALK.

Got an idea?  
Snap it.  
Send it.



You've sketched. Measured. Dreamed. Maybe you've already found the perfect solution – or at least a damn good idea of what it could be. Now it's getting real. Take a photo of what you've noted down. Of the quick sketch that might look rough, but shows exactly what you mean. Of the measurements you jotted down. Of that idea that suddenly felt right.

## SEND IT OVER. STRAIGHT TO US. NO DETOURS.

To our sales team – real people for real ideas. We'll take a look. Think along with you. Ask if something's unclear. And then, together, we'll turn your sketch into a loft door that's exactly how you imagined it. Because the best thing about a great idea is when it becomes real. Response within 24 hours. Promise.

 loft\_by\_flynn



© 2026 by FLYNN GmbH | Subject to technical changes, misprints, and errors. All models are protected by design rights. Status: 100 / 2006

**BOKE**  **SOLUTIONS**

**Boke Solutions LLC**  
1231 Stirling Rd, Suite 105  
Dania Beach, Florida 33004  
+1 754-227-9701  
sales@bokesolutions.com  
www.bokesolutions.com